

USDA Standards

Grade A Color Classes	Taste	Percent Light Transmittance
Grade A Golden	Delicate	≥ 75
Grade A Amber	Rich	50 to 74
Grade A Dark	Robust	25 to 49
Grade A Very Dark	Strong	< 25

Tips for an Accurate Measurement

When taking measurements, the outside of the cuvette must be dry and free of syrup, fingerprints, oil, or dirt. Wipe it thoroughly with a lint-free cloth prior to insertion.

Make sure cuvettes and beakers are completely dry before using. Excess water will leave streaks in the syrup sample which may affect results.

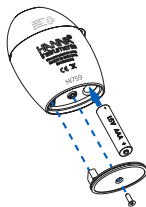
Dispense or pour the sample slowly. When transferring the syrup into the cuvette, be careful not to generate bubbles as they may cause inaccurate readings.

It is important that the sample is not turbid and does not contain debris.



Battery Management

To conserve battery, the instrument shuts down after 10 minutes of non-use. To replace the battery, turn the instrument off by holding the button until the meter shuts off. Turn the instrument upside down and remove the battery cover with a screwdriver. Remove the battery from its location and replace it with a new one, inserting the negative end first. Replace the battery cover and screw.



Recommendations for Users

Before using Hanna Instruments products, make sure that they are entirely suitable for your specific application and for the environment in which they are used. Operation of these instruments may cause unacceptable interferences to other electronic equipment, thus requiring the operator to take all necessary steps to correct such interferences. Any variation introduced by the user to the supplied equipment may degrade the instrument's EMC performance. To avoid damages or burns, do not put the instrument in microwave oven. For yours and the instrument safety do not use or store the instrument in hazardous environments.

Accessories

Code	Description
HI759-11	Glycerol Standard Cuvettes (2 pcs.)
HI731318	Cloth for wiping cuvettes (4 pcs.)
HI731359	Round Glass Cuvettes with Caps (25 pcs.)
HI740028P	1.5V AAA Batteries (12 pcs.)
HI93703-50	Cuvette Cleaning Solution (230 mL)

Warranty

HI759 is warranted for a period of one year after date of purchase against defects in workmanship and materials when used for their intended purpose and maintained according to instructions. This warranty is limited to repair or replacement free of charge. Damage due to accidents, misuse, tampering or lack of prescribed maintenance is not covered. If service is required, contact your local Hanna office. If under warranty, report the model number, date of purchase, serial number and the nature of the problem. If the repair is not covered by the warranty, you will be notified of the charges incurred. If the instrument is to be returned to Hanna Instruments, first obtain a Return Goods Authorization number from the Technical Service department and then send it with shipping costs prepaid. When shipping any instrument, make sure it is properly packed for complete protection.

Hanna Instruments reserves the right to modify the design, construction, or appearance of its products without advance notice.

INSTRUCTION MANUAL

HI759 Maple Syrup Digital Grader



Thank You

Thank you for choosing a Hanna Instruments product. Please read this instruction manual carefully before using the instrument.

For more information about Hanna Instruments and our products, visit www.hannainst.com.

For technical support, contact your local Hanna Instruments Office or email us at tech@hannainst.com

Find your local Hanna office on www.hannainst.com

Preliminary Examination

Please examine this product carefully. Make sure that the instrument is not damaged. If any damage occurred during shipment, please contact your local Hanna Instruments Office.

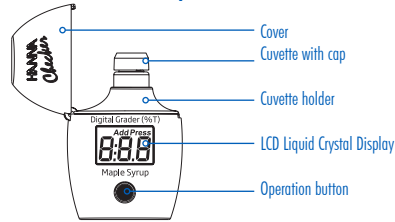
Each HI759 meter is supplied complete with:

- Sample Cuvettes and Caps (3 pcs.)
- Glycerol reference cuvette
- 20 mL beakers (3 pcs.)
- 1.5V AAA Battery (1 pc.)
- Instruction Manual and Quick Reference Guide

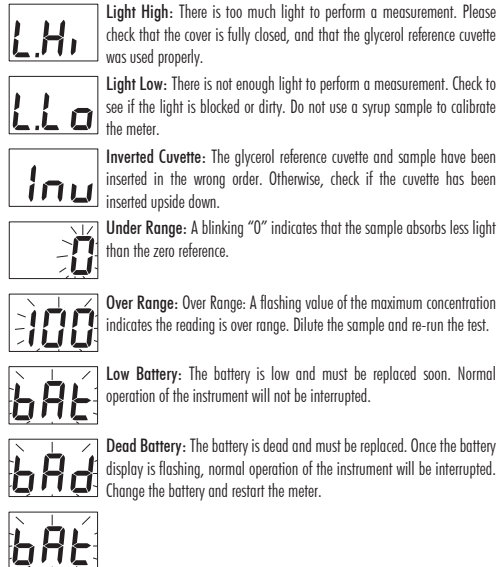
Specifications

Range	0 to 100 % transmittance
Resolution	1 % transmittance
Accuracy	±4 % transmittance
Light Source	Light Emitting Diode @560 nm
Light Detector	Silicon Photocell
Environment	0 to 50 °C (32 to 122 °F); max 95% RH non-condensing
Battery Type	1.5V AAA (1 pc.)
Auto-Shut off	After 10 minutes of non-use
Dimensions	86.0 x 61.0 x 37.5 mm (3.4 x 2.4 x 1.5")
Weight	52 g (1.84 oz.)

Functional Description

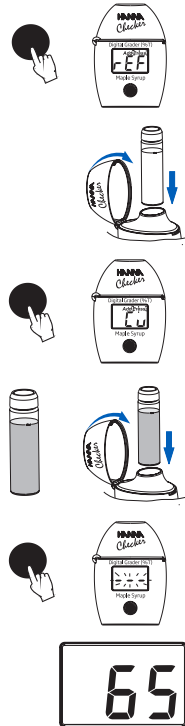


Errors and Warnings



Measurement Procedure

- Turn the meter on by pressing the button. All tags will be displayed. The display will show "Add rEF" with "Press" blinking to indicate the meter is ready to calibrate.
- Open the cover and insert the sealed glycerol reference cuvette into the meter. Close the cover.
- Press the button to calibrate the meter. Three lines will blink to show that calibration is taking place.
- The display will then show "Add Cu" with "Press" blinking when the meter has successfully been calibrated.
- Fill a clean, dry cuvette with 10 mL of maple syrup sample and replace the cap. Open the cover and insert the cuvette into the meter. Close the cover.
- Press the button to take the measurement. Three lines will blink to show that a measurement is taking place.
- The meter displays the percent light transmittance of the maple syrup. To take another sample reading, press the button. To turn off, press and hold the button for 3 seconds. The meter automatically turns off after 10 minutes.



Hanna Instruments reserves the right to modify the design, construction or appearance of its products without advance notice.